



fiorentini

WWW.FIORENTINISPA.COM

Organizzazione con
Sistema di Gestione Certificato
ISO 9001 : 2008



S28SNEW

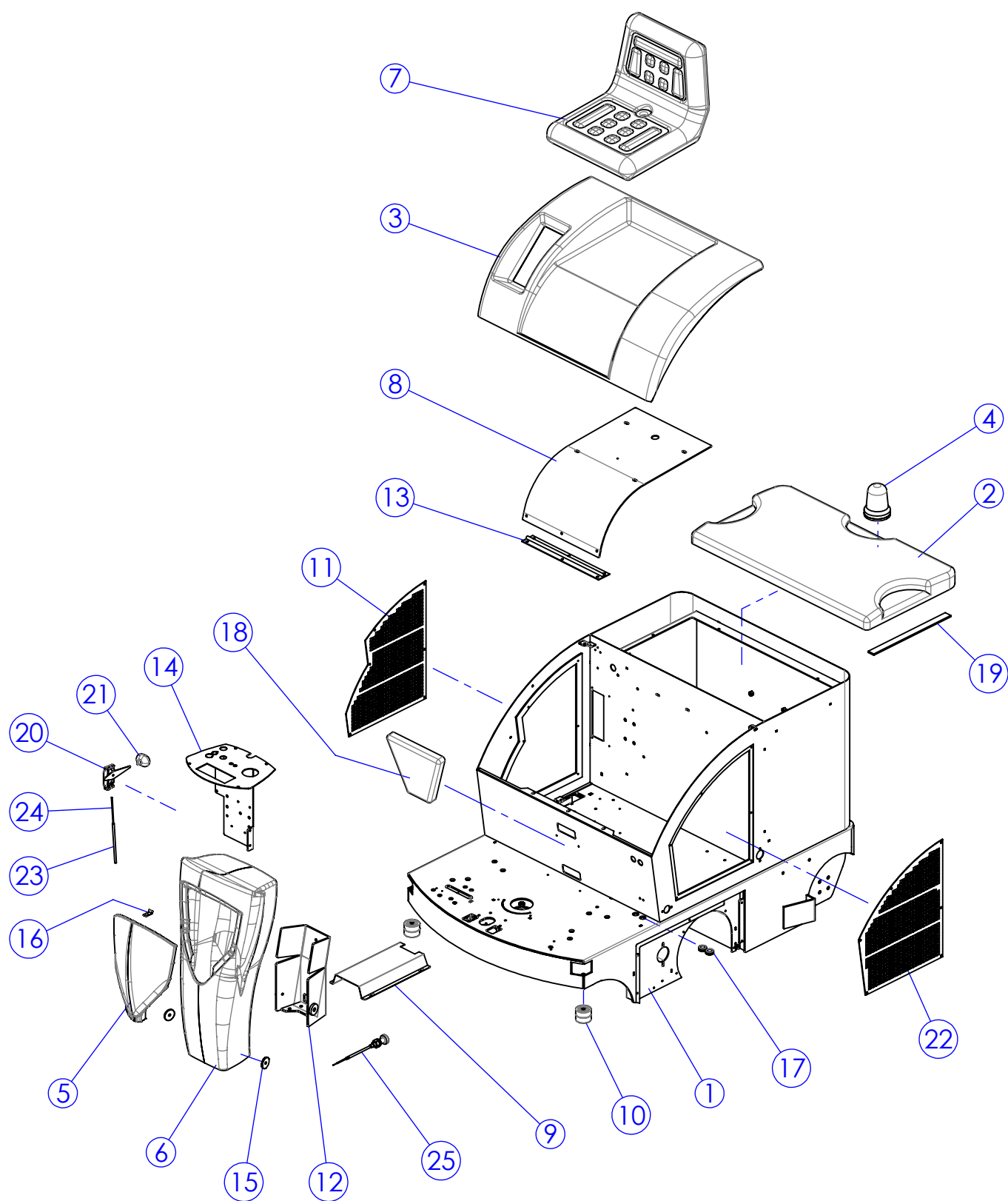
VERSIONE BENZINA

PARTI DI RICAMBIO/ SPARE PARTS
PIECES DETACHEES/ ERSATZTEILE



ING. O. FIORENTINI
INDUSTRIAL CLEANING MACHINE

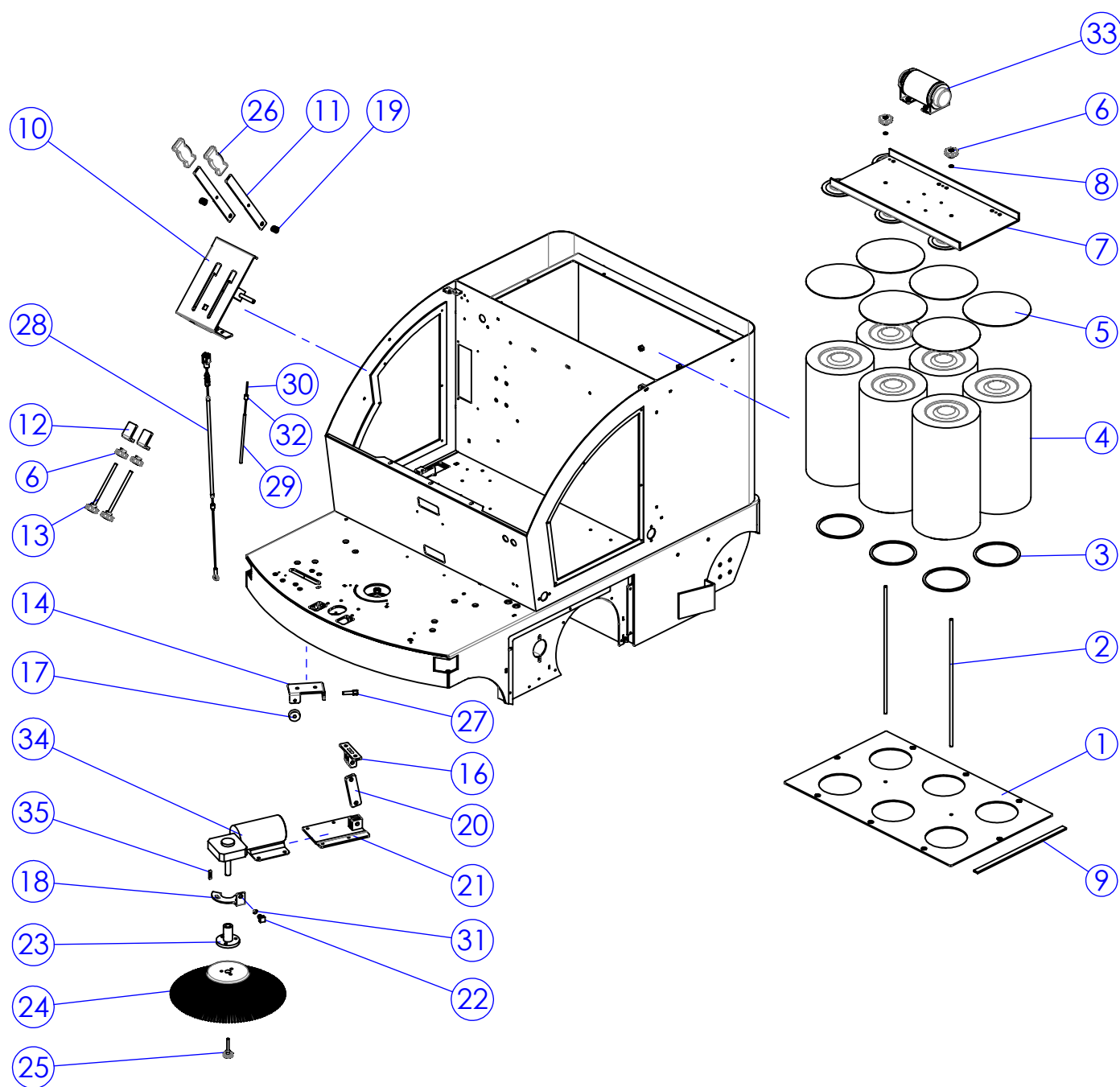
TAV.1



fiorentini

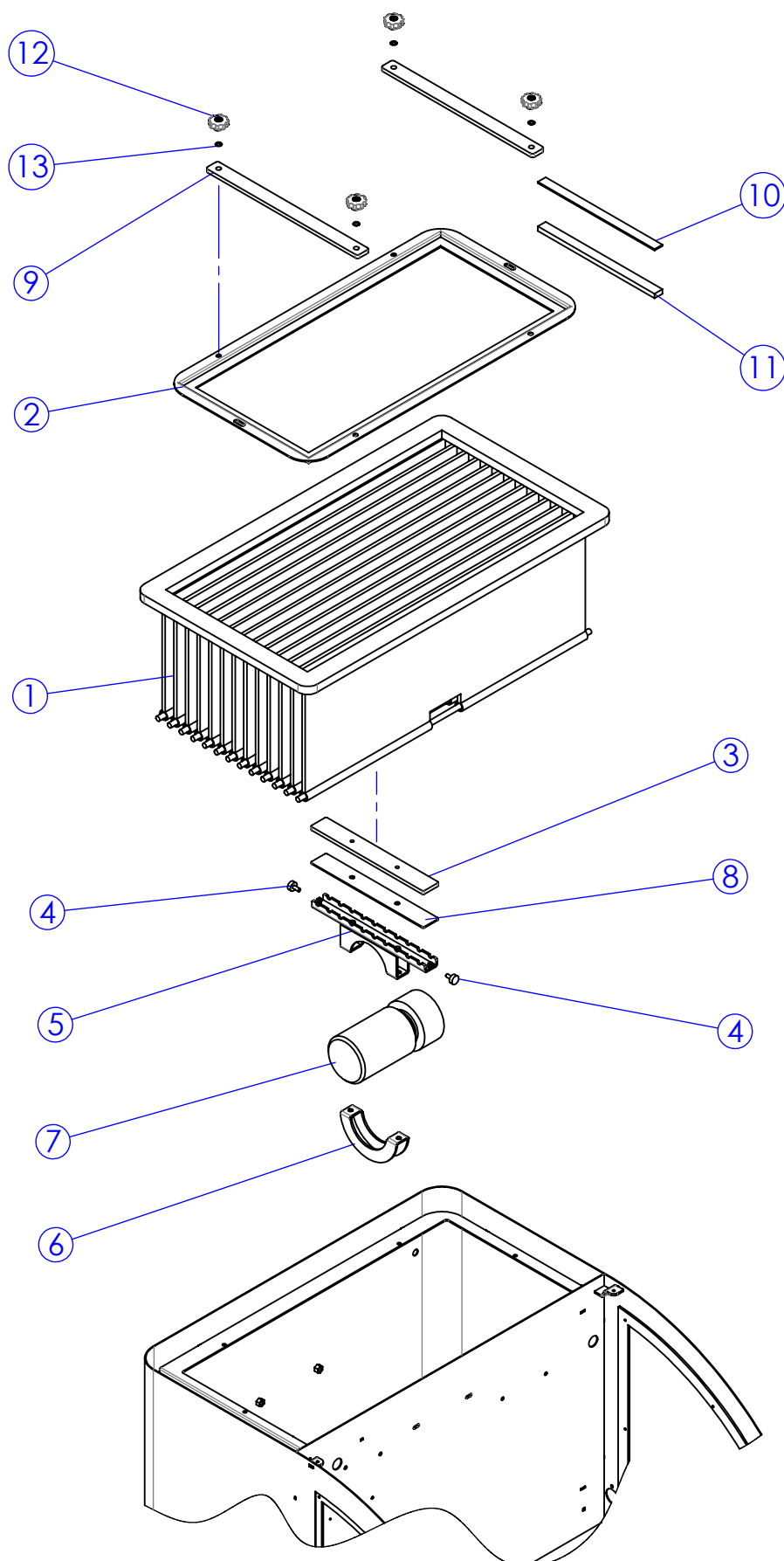
| POS. | CODICE | Q.TA | DESCRIZIONE | DESCRIPTION | DESCRIPTION | BEZEICHNUNG |
|------|---------|------|---|--------------------------------|--------------------------------|-------------------------|
| 1 | TP5111 | 1 | Telaio base | Frame | Chassis | Rahmen |
| 2 | CO5062 | 1 | Coperchio filtri | Cover | Couvercle | Deckel |
| 3 | CA5049 | 1 | Carter copri motore/ supp. sedile | Cover | Couvercle | Deckel |
| 4 | PY5183 | 1 | Lampeggiante flexi lamp 12-24V | Blinker | Clignoteur | Blinkende |
| 5 | CO250 | 1 | Coperchio frontalino-Blu | Front cover-Blue | Couvercle partie frontale-Bleu | Deckel f.stirnteil-Blau |
| 6 | SB5037 | 1 | Musetto macchina | Machine nose | Nez machine | Machinnennase |
| 7 | MI378 | 1 | Sedile completo di guide | Seat | Siege | Sitz |
| 8 | SU5274 | 1 | Lamiera supporto sedile | Seat support | Support | Halter |
| 9 | LM5322 | 1 | Lamiera centrale protezione cuscinetti | Cover | Couvercle | Deckel |
| 10 | RT091 | 4 | Ruota in nylon bianco 50X19 | Shock absorber wheel | Roue | Rad |
| 11 | LM5452 | 1 | Lamiera chiusura DX | Right cover | Couvercle | Deckel |
| 12 | LM5314 | 1 | Lamiera supporto musetto | Nose support | Support | Halter |
| 13 | MV5089 | 1 | Cerniera sollevamento coperchio supporto sedile | Hinge | Charniere | Scharnier |
| 14 | PL5010 | 1 | Plancia supporto gruppo elettrico | Electric group support | Support | Halter |
| 15 | VI040 | 2 | Rondella Speciale Zincata | Washer | Rondelle | Scheibe |
| 16 | ST138 | 1 | Piastrina di aggancio copri gruppo cucciolo | Board cover fixing bracket | Support couvercle | Buegel f.deckel |
| 17 | PY240 | 2 | Passacavo Telaio Medio | Middle frame grommet | Passe-cable | Kabeldurchgang |
| 18 | CO5064N | 1 | Coperchio cavi elettrici | Electric cable cover | Couvercle | Deckel |
| 19 | GR5088 | 1 | Guarnizione mousse adesiva 25x5 L=2400 | Gasket | Garniture | Dichtung |
| 20 | MI307 | 1 | Leva comando acceleratore | Lever | Levier | Hebel |
| 21 | MI309 | 1 | Pomello rosso AE300 | Handle | Poignee | Handgriff |
| 22 | LM5334 | 1 | Lamiera chiusura laterale Sx | Left cover | Couvercle | Deckel |
| 23 | MI5175 | 1 | Guaina cavo sollevam. spazzola laterale Sx | Left brush lifting wire sheath | Gaune fil | Das futteral |
| 24 | MI5167 | 1 | Cavo acceleratore | Wire | Cable | Kabel |
| 25 | MI5166 | 1 | Cavo starter | Starter wire | Cable | Kabel |

TAV.2



fiorentini

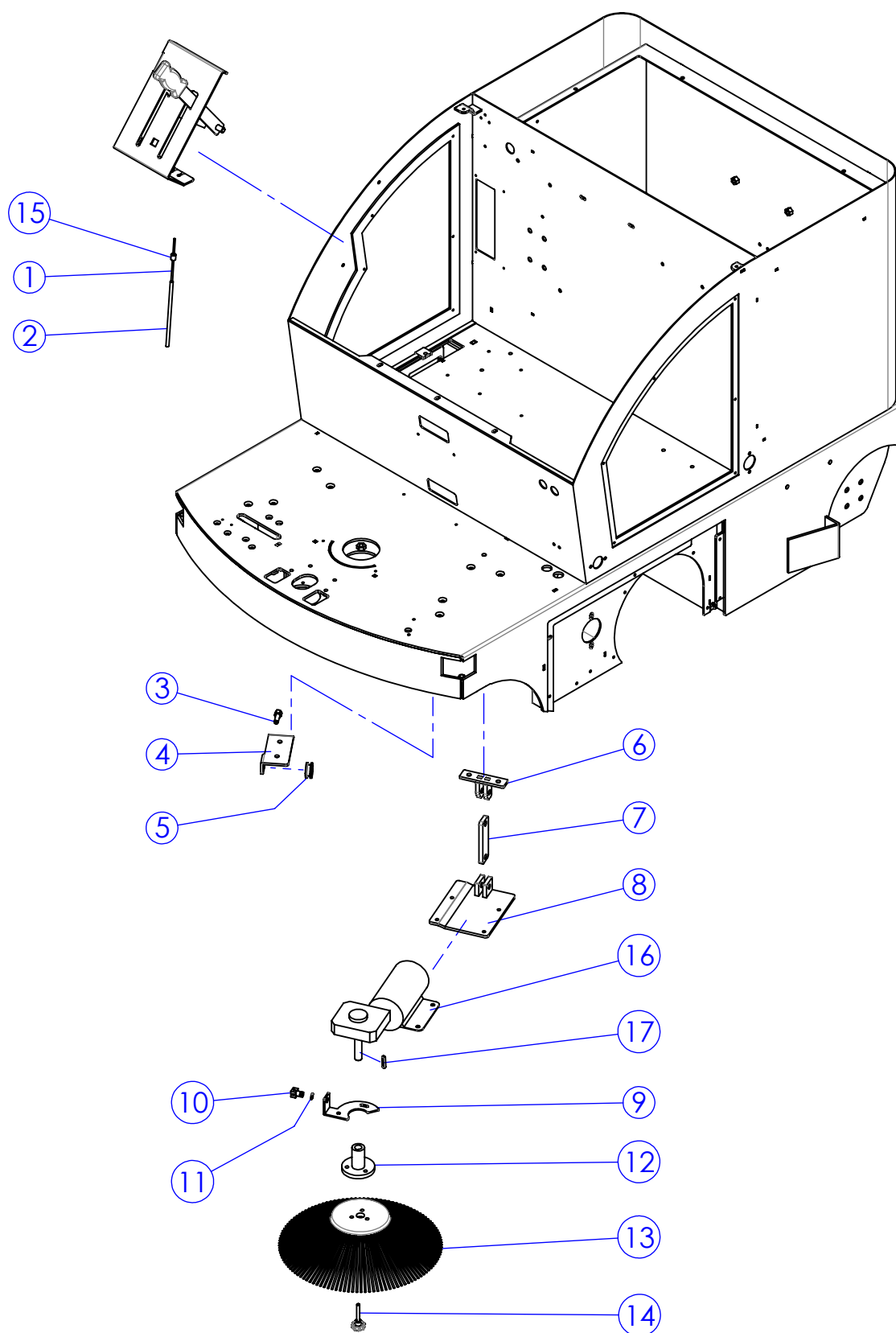
| POS. | CODICE | Q.TA | DESCRIZIONE | DESCRIPTION | DESCRIPTION | BEZEICHNUNG |
|------|--------|------|--|----------------------------------|--------------------------------|---------------------|
| 1 | SU5273 | 1 | Supporto filtri | Filter support | Support | Halter |
| 2 | TI075 | 2 | Perno bloccaggio filtri | Pin | Pivot | Drehpunkt |
| 3 | GR024 | 6 | Guarnizione filtro | Cartridge filter gasket | Garniture | Dichtung |
| 4 | FT009 | 6 | Filtro a cartuccia | Cartridge filter | Filtre | Filter |
| 5 | BP5076 | 6 | Gomma protezione filtro aspirazione | Suction filter rubber protection | Protection | Schutz |
| 6 | VP5004 | 4 | Pomello M8 femmina | Knob | Pommeau | Kugelgriff |
| 7 | SU5272 | 1 | Supporto scuotifiltro | Support | Support | Halter |
| 8 | GR079 | 2 | Rondella in gomma Ø8 | Rubber washer | Rondelle | Scheibe |
| 9 | GR5099 | 1 | Guarnizione mousse adesiva 15x5 L=2240 | Gasket | Garniture | Dichtung |
| 10 | SU5283 | 1 | Supporto leve sollevam. spazzole | Lever support | Support | Halter |
| 11 | LV5123 | 2 | Leva sollevamento spazzole | Lever | Levier | Hebel |
| 12 | ST5053 | 2 | Staffa fermo leve | Plate | Plaquette | Teller |
| 13 | VP5008 | 2 | Pomello M8x130 | Knob | Pommeau | Kugelgriff |
| 14 | ST5047 | 1 | Staffa DX supporto spazzole | Brush support | Support | Halter |
| 15 | MI104 | 1 | Registro Filo Freno M8 | Register Brake Cable M8 | Registre | Registrieren |
| 16 | LV5122 | 1 | Leva sollevam. spazzola laterale | Lever | Levier | Hebel |
| 17 | PP134 | 1 | Puleggia per filo freno | Brake pulley | Poulie frein | Riemenscheibe |
| 18 | PT5190 | 1 | Piastra sollevam. motore spazzola laterale | Plate | Plaquette | Teller |
| 19 | ML001 | 2 | Molla | Spring | Ressort | Feder |
| 20 | PT5183 | 1 | Piastra sollevam. leva | Plate | Plaquette | Teller |
| 21 | PT5184 | 1 | Piastra supporto motoriduttore lat. DX | Plate | Plaquette | Teller |
| 22 | MV003 | 1 | Morsetto Filo | Wire clamp | Clamp | Klemm |
| 23 | GN026 | 1 | Attacco spazzola laterale | Brush flange | Bride | Flansch |
| 24 | SZ5013 | 1 | Spazzola Laterale | Side Nylon Brush | Nylon brosse | Burste |
| 25 | VP5016 | 1 | Volantino M6x40 | Knob | Pommeau | Kugelgriff |
| 26 | MN5003 | 2 | Manopola piatta 6x25 | Handle | Poignee | Kugelgriff |
| 27 | MI104 | 1 | Registro filo freno M8 | Adjustment wire | Régulation | Regulierung |
| 28 | MI5333 | 1 | Cavo Sollevamento Spazz. Centrale | Lifting cable central brush | Ascenseur cable central brosse | Hauptbürste Hubseil |
| 29 | MI5173 | 1 | Guaina cavo sollevam. spazzola laterale Dx | Sheath | Gaune fil | Das futteral |
| 30 | MI5172 | 1 | Cavo sollevamento spazzola laterale Dx | Wire | Cable | Kabel |
| 31 | SG001 | 1 | Anello seeger per esterni Ø10 UNI7435 | Seeger ring | Seeger | Seeger |
| 32 | MV7003 | 1 | Controguaina Ø9.5x11 x guaina Ø8 | Sheath | Gaune fil | Das futteral |
| 33 | MO5006 | 1 | Motore scuotifiltro 12V | Filtershaker motor | Moteur | Motor |
| 34 | MO5112 | 1 | Motoriduttore spazzola lat. Dx 12V | Right brush motor | Moteur | Motor |
| 35 | CH013 | 1 | Linguetta 5x5x25 | Tongue | Clavette | Passfeder |



fiorentini

| POS. | CODICE | Q.TA | DESCRIZIONE | DESCRIPTION | DESCRIPTION | BEZEICHNUNG |
|------|--------|------|--|-------------------------|--------------------------|-----------------------|
| 1 | FT5046 | 1 | Filtro a Sacche | Filter Bags | Filtre a poches | Beutelfilter |
| 2 | TP5094 | 1 | Telaio bloccaggio filtro a sacche | Fixing filter frame | Chassis | Rahmen |
| 3 | ST5040 | 1 | Staffa supporto vibratore | Bracket vibrator | Bride de support vibreur | Buegel |
| 4 | MI2509 | 2 | Antivibrante 18x7.5 M6 | Antivibration M6 18x7.5 | Silent-block | Silent-block |
| 5 | SU5235 | 1 | Supporto Vibratore Inferiore | Vibrator Support Lower | Support | Halter |
| 6 | SU5141 | 1 | Supporto Vibratore Superiore | Vibrator support | Support vibreur sup. | Stuetze |
| 7 | MO164 | 1 | Motore Scuotifiltro 12V | Engine Shake Filter | Moteur secoue-filtre | Schuetzelfiltersmotor |
| 8 | GR5093 | 1 | Gomma per stecche filtro a sacche | Gasket | Garniture | Dichtung |
| 9 | LM5321 | 2 | Listello fissaggio filtro a sacche | Fixing filter bar | Latte de fixation filtre | Leiste |
| 10 | GR5105 | 1 | Guarnizione mousse adesiva 20x3 L=2100mm | Gasket | Garniture | Dichtung |
| 11 | GR5103 | 1 | Guarnizione mousse adesiva 20x10 L=2m | Gasket | Garniture | Dichtung |
| 12 | VP5004 | 4 | Pomello M8 femmina | Knob | Pommeau | Kugelgriff |
| 13 | GR079 | 4 | Rondella in gomma Ø8 | Rubber washer | Rondelle | Scheibe |

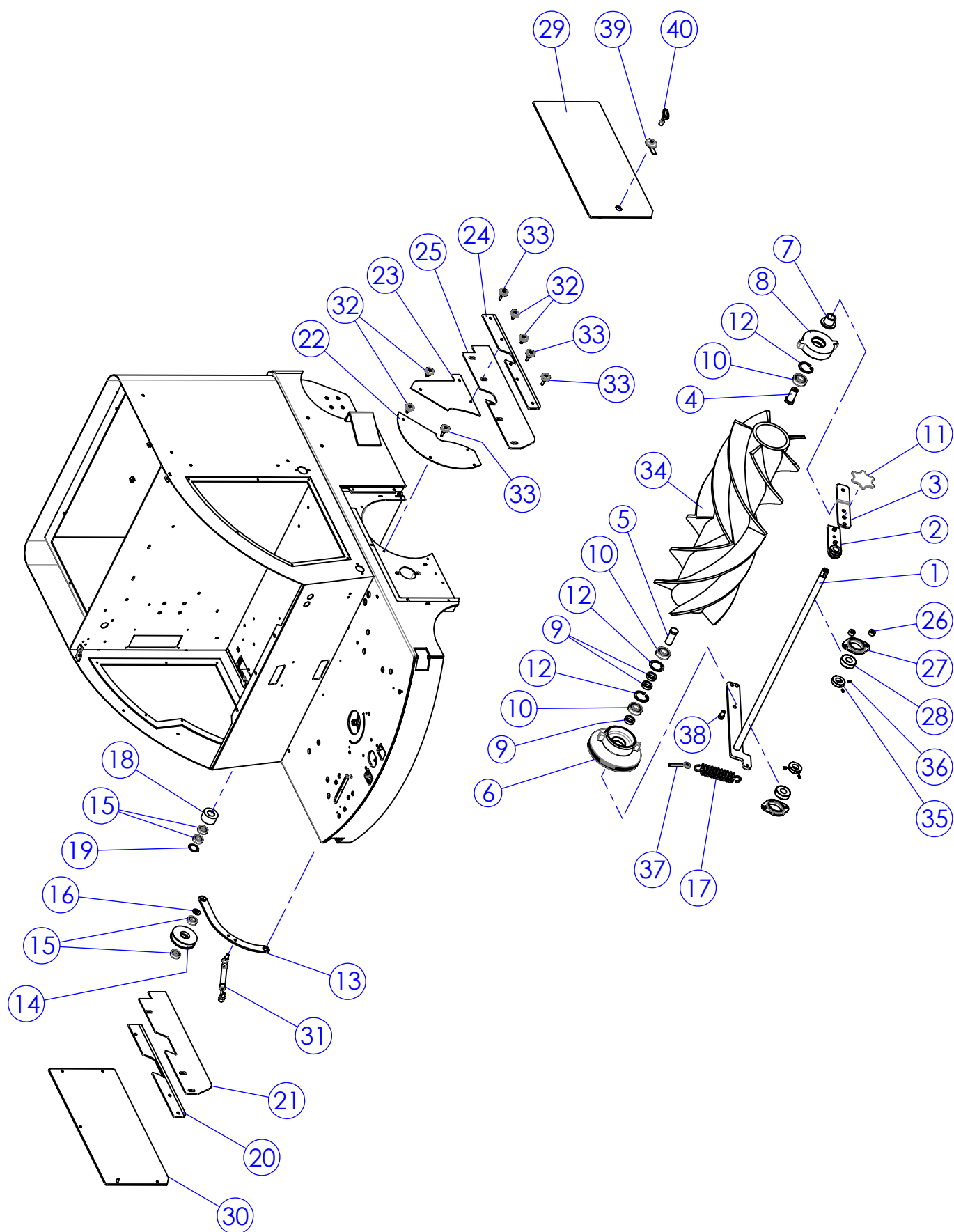
TAV.3



fiorentini

| POS. | CODICE | Q.TA | DESCRIZIONE | DESCRIPTION | DESCRIPTION | BEZEICHNUNG |
|------|--------|------|--|--------------------------------|--------------|---------------|
| 1 | MI5174 | 1 | Cavo sollevamento spazzola laterale Sx | Left brush lifting wire | Cable | Kabel |
| 2 | MI5175 | 1 | Guaina cavo sollevam. spazzola laterale Sx | Left brush lifting wire sheath | Gaune fil | Das futteral |
| 3 | MI104 | 1 | Registro filo freno M8 | Adjustment wire | Régulation | Regulierung |
| 4 | ST5048 | 1 | Staffa Sx supporto spazzola | Brush support | Support | Halter |
| 5 | PP134 | 1 | Puleggia per filo freno | Brake pulley | Poulie frein | Riemenscheibe |
| 6 | LV5122 | 1 | Leva sollevam. spazzola laterale | Lever | Levier | Hebel |
| 7 | PT5183 | 1 | Piastra sollevam. leva | Plate | Plaquette | Teller |
| 8 | PT5185 | 1 | Piastra supporto motorid. laterale Sx | Brush motor support | Support | Halter |
| 9 | PT5190 | 1 | Piastra sollevam. motore spazzola laterale | Plate | Plaquette | Teller |
| 10 | MV003 | 1 | Morsetto Filo | Wire clamp | Clamp | Klemm |
| 11 | SG001 | 1 | Anello seeger per esterni Ø10 UNI7435 | Seeger ring | Seeger | Seeger |
| 12 | GN026 | 1 | Attacco spazzola laterale | Brush flange | Bride | Flansch |
| 13 | SZ5013 | 1 | Spazzola Laterale | Side Nylon Brush | Nylon brosse | Burste |
| 14 | VP5016 | 1 | Volantino M6x40 | Knob | Pommeau | Kugelgriff |
| 15 | MV7003 | 1 | Controguaina Ø9.5x11 x guaina Ø8 | Sheath | Gaune fil | Das futteral |
| 16 | MO5111 | 1 | Motoriduttore spazzola lat. Sx 12V | Brush motor | Moteur | Motor |
| 17 | CH013 | 1 | Linguetta 5x5x25 | Tongue | Clavette | Passfeder |

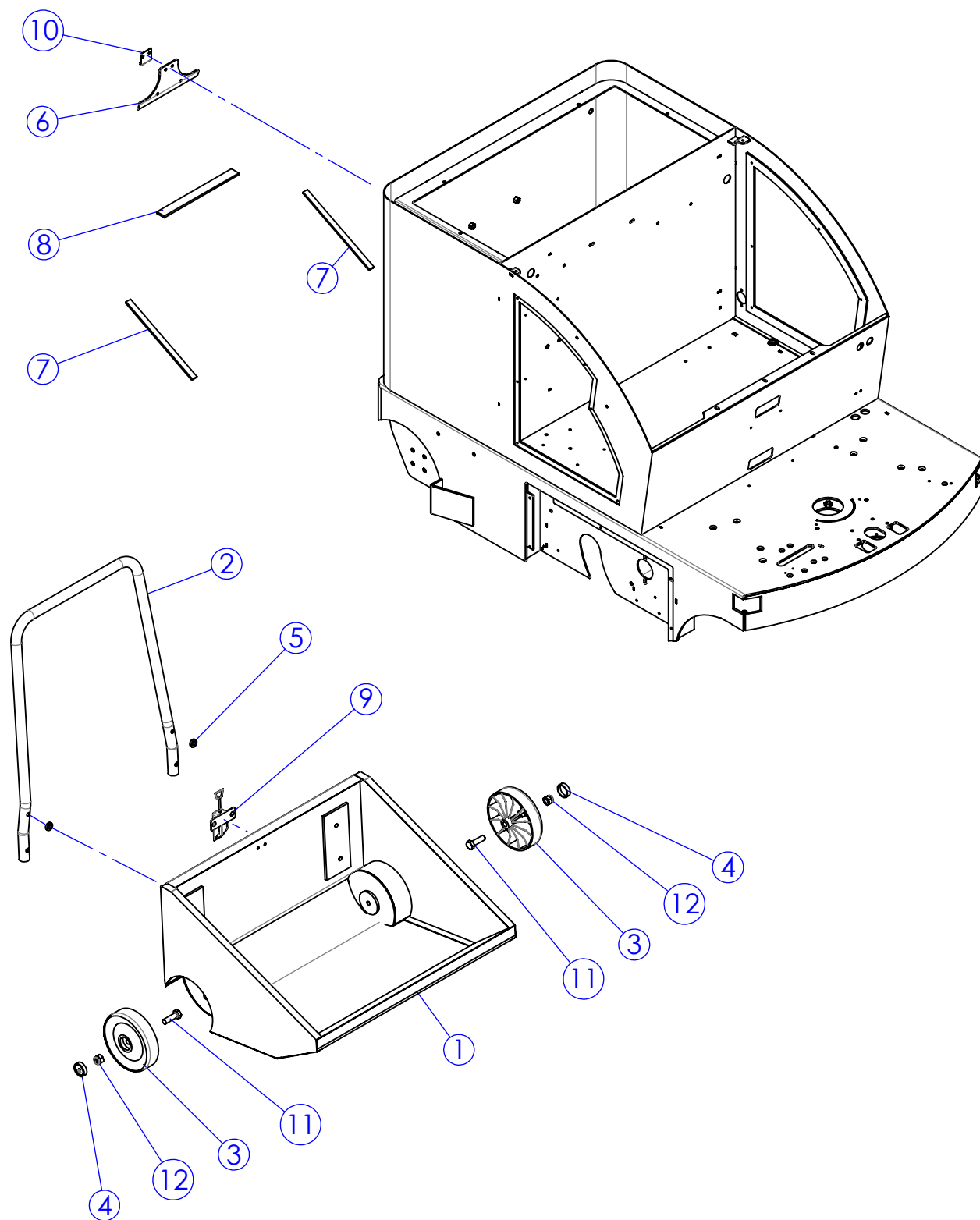
TAV.4



fiorentini

| POS. | CODICE | Q.TA | DESCRIZIONE | DESCRIPTION | DESCRIPTION | BEZEICHNUNG |
|------|--------|------|--|-----------------------------------|--------------------|---------------|
| 1 | AL5065 | 1 | Albero porta spazzola centrale | Central brush shaft | Arbre | Welle |
| 2 | LV5152 | 1 | Leva soll. spazzola centrale fissa | Lever | Levier | Hebel |
| 3 | LV5153 | 1 | Leva soll. spazzola centrale mobile | Lever | Levier | Hebel |
| 4 | PE5130 | 1 | Perno innesto Sx | Pin | Pivot | Drehpunkt |
| 5 | PE5131 | 1 | Perno innesto dx | Pin | Pivot | Drehpunkt |
| 6 | PP5074 | 1 | Puleggia spazzola centrale poly-V | Central brush pulley | Poulie | Riemenscheibe |
| 7 | DT5007 | 1 | Distanziale spazzola centrale | Spacer | Espaceur | Abstandhalter |
| 8 | SU5025 | 1 | Supporto spazzola | Brush support | Support | Halter |
| 9 | DT5111 | 3 | Distanziale per innesto spazzola | Spacer | Espaceur | Abstandhalter |
| 10 | CS005 | 3 | Cuscinetto a Sfere 6004 2RS1 | Ball Bearing 6004 2RS1 | Roulement a billes | Kugellager |
| 11 | VP5020 | 1 | Pomello spazzola centrale | Knob | Pommeau | Kugelgriff |
| 12 | SG065 | 3 | Anello seeger per interni Ø42 | Internal seeger ring | Seeger | Seeger |
| 13 | LV5136 | 1 | Leva Tendicinghia spazzola centrale | Lever | Levier | Hebel |
| 14 | PP5052 | 1 | Puleggia tendicinghia | Pulley | Poulie | Riemenscheibe |
| 15 | CS003 | 4 | Cuscinetto a sfere 6200 2RS Tendicinghia | Ball Bearing 6200 2RS tightener | Roulement | Kugellager |
| 16 | MI5136 | 1 | Rondella di spessore 12x24x0.5 acciaio | Washer | Rondelle | Scheibe |
| 17 | ML096 | 1 | Molla Pressione | Spring Pressure | Ressort | Feder |
| 18 | PP031 | 1 | Puleggia Tendicinghia | Belt Tensioner pulley | Poulie | Riemenscheibe |
| 19 | SG055 | 1 | Anello seeger per interni Ø30 | Seeger ring | Seeger | Seeger |
| 20 | LM5320 | 1 | Listello Dx spazzola centrale | Right sheet | Lardon | Blech |
| 21 | BP5081 | 1 | Minigonna Dx spazzola centrale | Right blade | Lame | Messer |
| 22 | LM5453 | 1 | Lamiera estrazione anteriore | Front sheet | Lardon | Blech |
| 23 | LM5454 | 1 | Lamiera estrazione posteriore | Rear sheet | Lardon | Blech |
| 24 | LM5319 | 1 | Listello Sx spazzola centrale | Left sheet | Lardon | Blech |
| 25 | BP5080 | 1 | Minigonna Sx spazzola centrale | Left blade | Lame | Messer |
| 26 | DT041 | 2 | Distanziale Ø8xØ18x10 | Spacer | Entretoise | Abstandhalter |
| 27 | SC001 | 2 | Supporto cuscinetto PFT47 | Bearing support | Support | Halter |
| 28 | BO5056 | 2 | Boccola per sterzo | Bush | Douille | Buchse |
| 29 | CA5075 | 1 | Carter Laterale Sx | Left cover | Couvercle | Deckel |
| 30 | CA5076 | 1 | Carter Laterale DX | Right cover | Couvercle | Deckel |
| 31 | AM5008 | 1 | Molla a gas 250N c/snodi 90° | Spring | Ressort | Feder |
| 32 | VP5009 | 4 | Volantino M6x10 | Knob | Pommeau | Kugelgriff |
| 33 | VP043 | 4 | Pomello M6x20 8 lobi | Knob | Pommeau | Kugelgriff |
| 34 | SZ501 | 1 | Spazzola Centrale Nylon 700/701/702 | Brush Central | Brosse | Burste |
| 35 | DT5078 | 2 | Distanziale bloccaggio spazzola centrale | Spacer | Espaceur | Abstandhalter |
| 36 | VG013 | 4 | Grano M5x10 c/punta UNI5927/67 | Socket Set Screw Flat Point M5x10 | Grain | Duebel |
| 37 | MI5187 | 1 | Tirante ad occhio M8x52 | Tie-rod M8 | Tirant | Schieben |
| 38 | MV5054 | 1 | Morsetto per fune | Wire terminal | Etau | Klemme |
| 39 | CC5009 | 1 | Chiusura vetro post. cabina | Closure | Fermeture | Schließung |
| 40 | CC5010 | 1 | Chiave per chiusura | Key | Clè | Schlüssel |

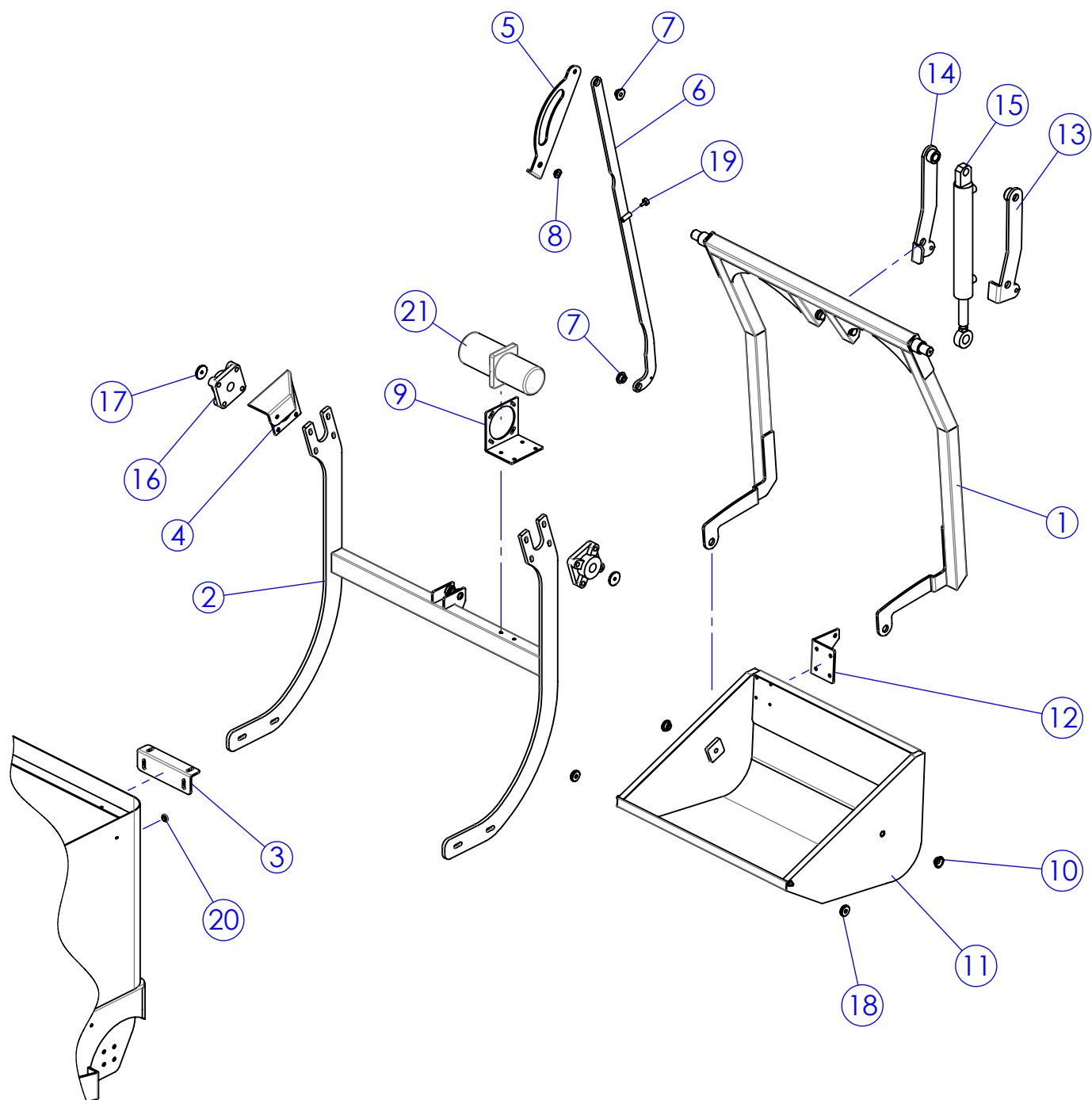
TAV.5



fiorentini

| POS. | CODICE | Q.TA | DESCRIZIONE | DESCRIPTION | DESCRIPTION | BEZEICHNUNG |
|------|--------|------|--|----------------------|-------------------|--------------------|
| 1 | TP5114 | 1 | Cassetto rifiuti scarico basso | Waste tray | Récipient déchets | Abfallbehälter |
| 2 | MN5017 | 1 | Manico cassetto rifiuti | Handle | Poignee | Griff |
| 3 | RT028 | 2 | Ruota fissa Ø150 | Wheel | Roue | Rad |
| 4 | CF003 | 2 | Cuffia blocca ruote | Wheel locking casing | Protecteur | Radaersperrekasten |
| 5 | DT143 | 2 | Distanziale telaio-serbatoio | Spacer | Espaceur | Abstandhalter |
| 6 | PT5189 | 1 | Piastra ferma cassetto | Plate | Plaquette | Teller |
| 7 | GR5089 | 2 | Guarnizione mousse adesiva 15x5 L=590 | Gasket | Garniture | Dichtung |
| 8 | GR5090 | 1 | Guarnizione mousse adesiva 25x5 L=670 | Gasket | Garniture | Dichtung |
| 9 | CC5002 | 1 | Gancio zincato registrabile | Galvanized hook | Crochet zingue | Verzinkter haken |
| 10 | CC5003 | 1 | Lamierino chiusura gancio | Hook plate | Plaquette | Teller |
| 11 | VE303 | 2 | Vite esagonale M12X40 | Hex Bolt M12x40 | Vis | Schraube |
| 12 | DD256 | 2 | Dado Autobloccante M12 UNI 7473 | Self Locking M12 Nut | Ecrou de surete | Mutter |

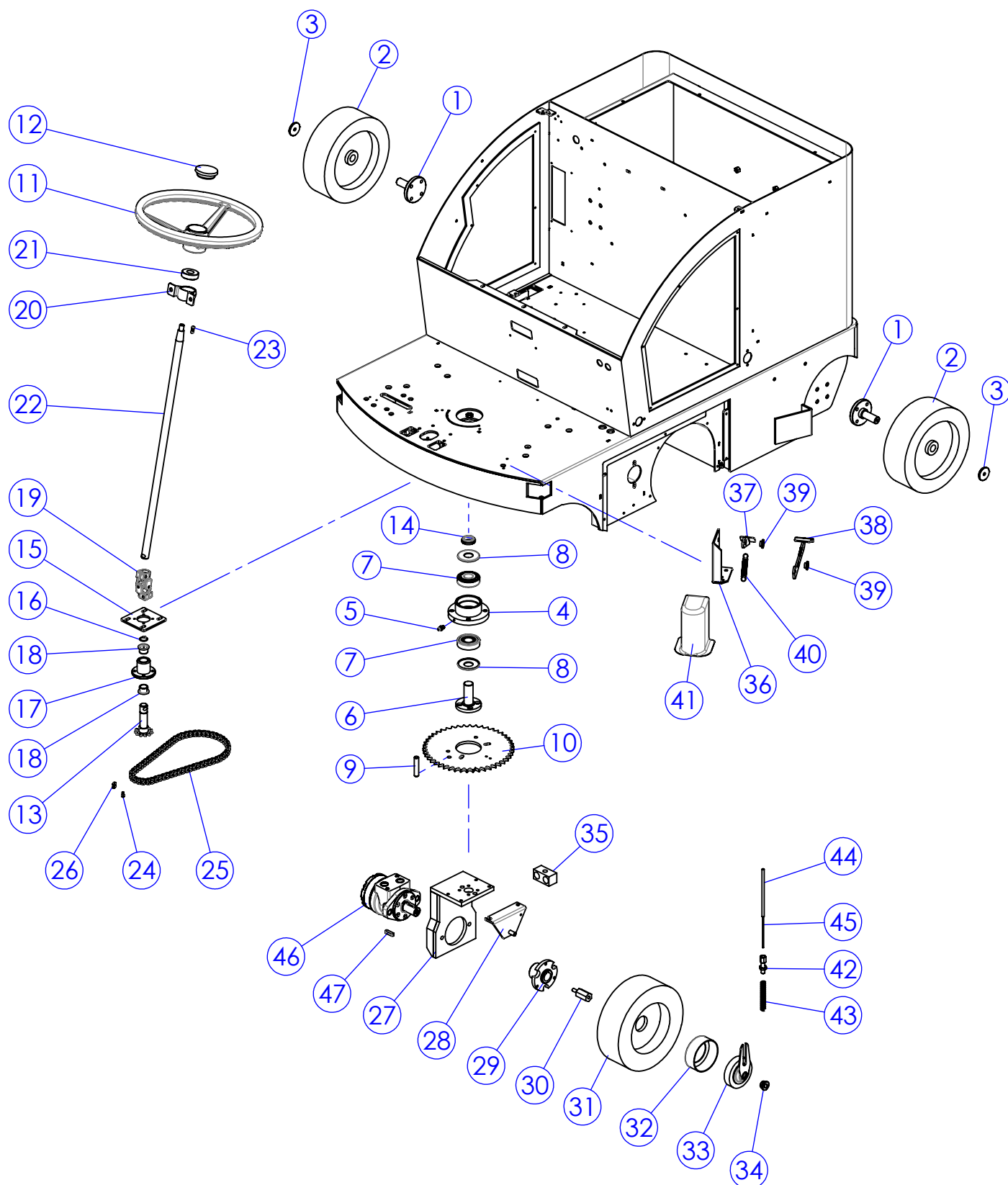
TAV.5-B



fiorentini

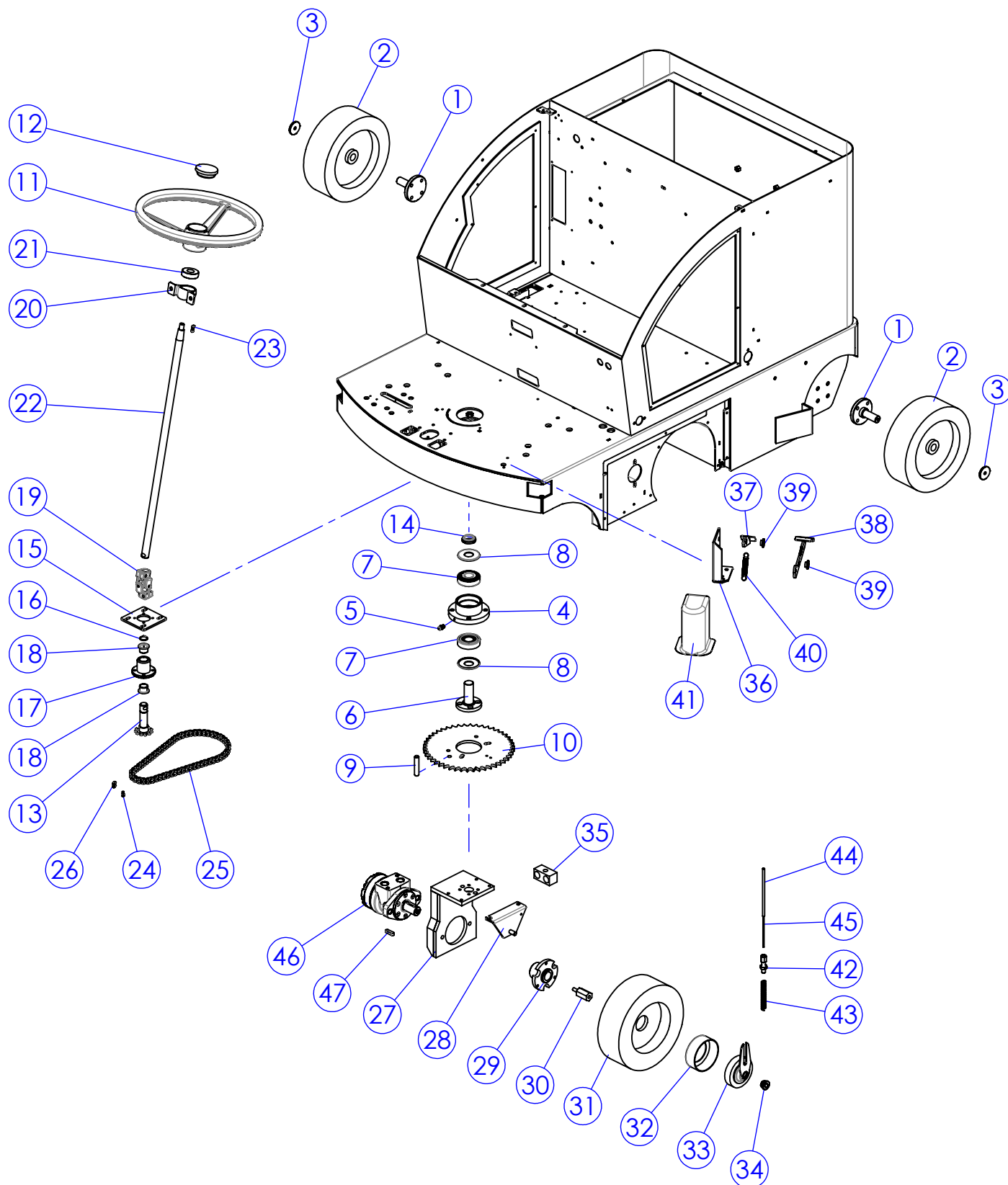
| POS. | CODICE | Q.TA | DESCRIZIONE | DESCRIPTION | DESCRIPTION | BEZEICHNUNG |
|------|--------|------|--|----------------------------|--------------|----------------|
| 1 | TP5107 | 1 | Telaio sollevamento cassone | Frame | Chassis | Rahmen |
| 2 | TP5108 | 1 | Controtelaio sollevamento cassone | Support | Support | Halter |
| 3 | LM5327 | 1 | Lamiera fissaggio controtelaio | Support | Support | Halter |
| 4 | LM5328 | 1 | Lamiera fermo leva cassetto rifiuti | Plate | Plaquette | Teller |
| 5 | MN5016 | 1 | Maniglia apertura cassone | Handle | Poignee | Griff |
| 6 | LV5125 | 1 | Leva leverismo apertura cassetto | Lever | Levier | Hebel |
| 7 | BO040 | 2 | Boccola leve sosp. gruppo spazzole | Bush | Douille | Buchse |
| 8 | BO050 | 1 | Boccola leva tendicinghia | Bush | Douille | Buchse |
| 9 | LM5325 | 1 | Lamiera supporto pompa idraulica | Support | Support | Halter |
| 10 | BO5071 | 2 | Boccola fissaggio cassetto | Bush | Douille | Buchse |
| 11 | TP5112 | 1 | Telaio cassone rifiuti | Frame | Chassis | Rahmen |
| 12 | PT5187 | 1 | Piastra apertura cassone | Plate | Plaquette | Teller |
| 13 | SU5281 | 1 | Supporto Sx martinetto | Left support | Support | Halter |
| 14 | SU5282 | 1 | Supporto Dx martinetto | Right support | Support | Halter |
| 15 | MA5028 | 1 | Martinetto idraulico soll. cassone | Hydraulic jack | Verin | Hebebock |
| 16 | CS5017 | 2 | Cuscinetto UCF205 | Bearing | Roulement | Kugellager |
| 17 | VI040 | 2 | Rondella Speciale Zincata | Washer | Rondelle | Scheibe |
| 18 | RT187 | 2 | Ruota per cassetto scarico alto | Wheel | Roue | Rad |
| 19 | MI2509 | 1 | Antivibrante 18x7.5 M6 | Antivibration M6 18x7.5 | Silent-block | Silent-block |
| 20 | PY722 | 1 | Passacavo in gomma 20.5x10xh7 | Fairlead | Passe-cable | Kabeldurchgang |
| 21 | PO5027 | 1 | Pompa sollevamento benna posteriore 12V | Pump | Pompe | Pumpe |

TAV.6



fiorentini

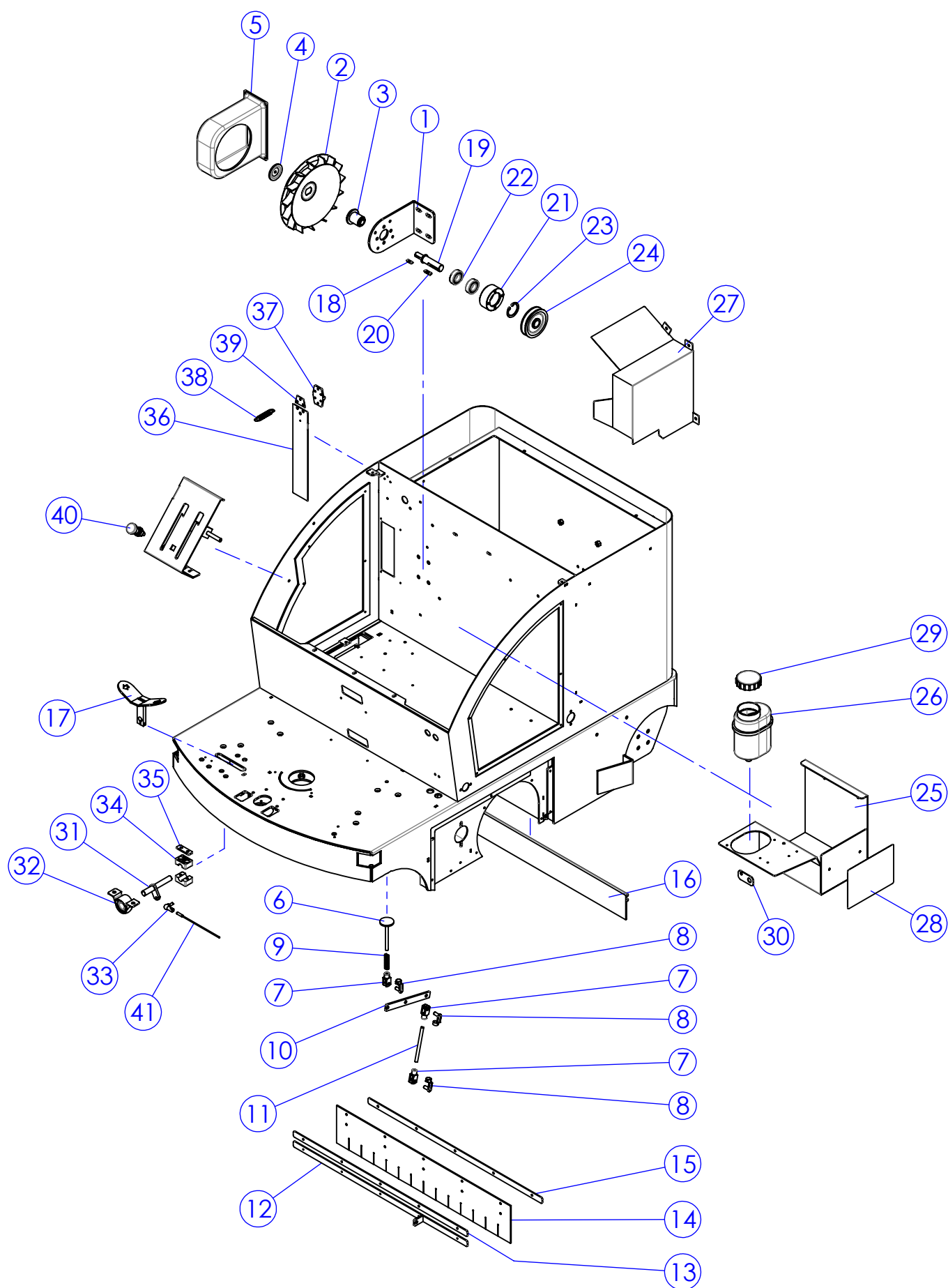
| POS. | CODICE | Q.TA | DESCRIZIONE | DESCRIPTION | DESCRIPTION | BEZEICHNUNG |
|------|--------|------|--|-------------------------------|---------------|----------------------------|
| 1 | RP5008 | 2 | Perno ruota posteriore | Pin | Pivot | Drehpunkt |
| 2 | RT5007 | 2 | Ruota posteriore | Wheel | Roue | Rad |
| 3 | VI040 | 2 | Rondella Speciale Zincata | Washer | Rondelle | Scheibe |
| 4 | SU5024 | 1 | Supporto perno ruota | Support | Support | Halter |
| 5 | IR001 | 1 | Ingrassatore a Sfera M6 | Grease nipple | Graisser | Schmiervorrichtung |
| 6 | RP5036 | 1 | Albero per supporto ruota | Shaft | Arbre | Welle |
| 7 | CS040 | 2 | Cuscinetto 30305 FLT | Bearing | Roulement | Kugellager |
| 8 | GI5004 | 2 | Parapolvere in lamiera | Gasket | Garniture | Dichtung |
| 9 | PE5026 | 1 | Perno finecorsa ruota sterzante | Pin | Pivot | Drehpunkt |
| 10 | XD5001 | 1 | Corona sterzo | Crown | Couronne | Krone |
| 11 | MI002 | 1 | Volante | Flywheel | Volant | Lenkrad |
| 12 | MI051 | 1 | Tappo Volante | Flywheel plug | Bouchon | Verschluss für das lenkrad |
| 13 | AL5007 | 1 | Perno sterzo | Steering pin | Pivot | Drehpunkt |
| 14 | DD267 | 1 | Ghiera autobloccante M25x1.5 | Nut | Ecrou | Mutter |
| 15 | PT5019 | 1 | Piastrina tendicinghia sterzo | Plate | Plaquette | Teller |
| 16 | SG016 | 1 | Anello seeger per esterni Ø20 UNI7435 | Seeger ring | Seeger | Seeger |
| 17 | MC5002 | 1 | Bussola perno sterzo | Bush support | Support | Halter |
| 18 | BO5008 | 2 | Boccola KUF2023 16.5 c/battuta | Bush | Douille | Buchse |
| 19 | GN010 | 1 | Snodo sterzo | Steering junction | Jonction | Verbindung |
| 20 | SC003 | 1 | Supporto Cuscinetto P47 | Bearing support | Support | Halter |
| 21 | BO5056 | 1 | Boccola per sterzo | Bush | Douille | Buchse |
| 22 | AL5018 | 1 | Albero sterzo superiore | Steering shaft | Arbre | Welle |
| 23 | CH011 | 1 | Linguetta 5x5x20 UNI6604-A | Parallel Key 5x5x20 UNI6604-A | Clavette | Passfeder |
| 24 | CT012 | 1 | Giunto catena | Junction | Jonction | Verbindung |
| 25 | CT5001 | 1 | Catena 1/2x3/16" senza giunto | Chain | Chaine | Kette |
| 26 | CT5011 | 1 | Falsa maglia a 1 rullo CT5001 1/2x3/16 | Half mesh | Demi-maille | Glied |
| 27 | SU5030 | 1 | Supporto ruota sterzante | Wheel support | Support | Halter |
| 28 | SU5312 | 1 | Supporto freno c/ganasce | Support | Support | Halter |
| 29 | RP5016 | 1 | Mozzo ruota anteriore | Pin | Pivot | Drehpunkt |
| 30 | DT5075 | 1 | Distanziale freno | Spacer | Entretoise | Abstandhalter |
| 31 | RT5010 | 1 | Ruota anteriore completa | Front wheel | Roue | Rad |
| 32 | FN5014 | 1 | Tamburo freno | Brake drum | Tambour frein | Bremstrommel |
| 33 | FN5021 | 1 | Ceppo freno anteriore | Front brake | Frein | Bremse |
| 34 | BO5061 | 1 | Boccola Centraggio Freno Anteriore | Bush | Douille | Buchse |
| 35 | MI5020 | 1 | Ferma tubi Ø18 | Pipe holder | Support tuyau | Rohrhalterung |



fiorentini

| POS. | CODICE | Q.TA | DESCRIZIONE | DESCRIPTION | DESCRIPTION | BEZEICHNUNG |
|------|---------|------|---|--------------------------------|-------------|--------------|
| 36 | ST5049 | 1 | Staffa supporto pedale freno | Support | Support | Halter |
| 37 | LV5116 | 1 | Leva pedale freno | Lever | Levier | Hebel |
| 38 | LV5117 | 1 | Leva pedale blocco freno | Lever | Levier | Hebel |
| 39 | BO050 | 2 | Boccola leva tendicinghia | Bush | Douille | Buchse |
| 40 | ML201 | 1 | Molla per apertura acqua soluzione | Spring | Ressort | Feder |
| 41 | CO5065N | 1 | Coperchio pedale freno - nero | Cover | Couvercle | Deckel |
| 42 | MI104 | 1 | Registro Filo Freno M8 | Register Brake Cable M8 | Registre | Registrieren |
| 43 | ML5015 | 1 | Molla | Spring | Ressort | Feder |
| 44 | MI5175 | 1 | Guaina cavo sollevam. spazzola laterale Sx | Left brush lifting wire sheath | Gaune fil | Das futteral |
| 45 | MI5193 | 1 | Cavo freno in acciaio L=1100 | Wire | Cable | Kabel |
| 46 | MO5110 | 1 | Motore trazione 125C OMR | Traction motor | Moteur | Motor |
| 47 | CH045 | 1 | Linguetta 8x7x30 UNI6604-A | Tongue | Clavette | Passfeder |

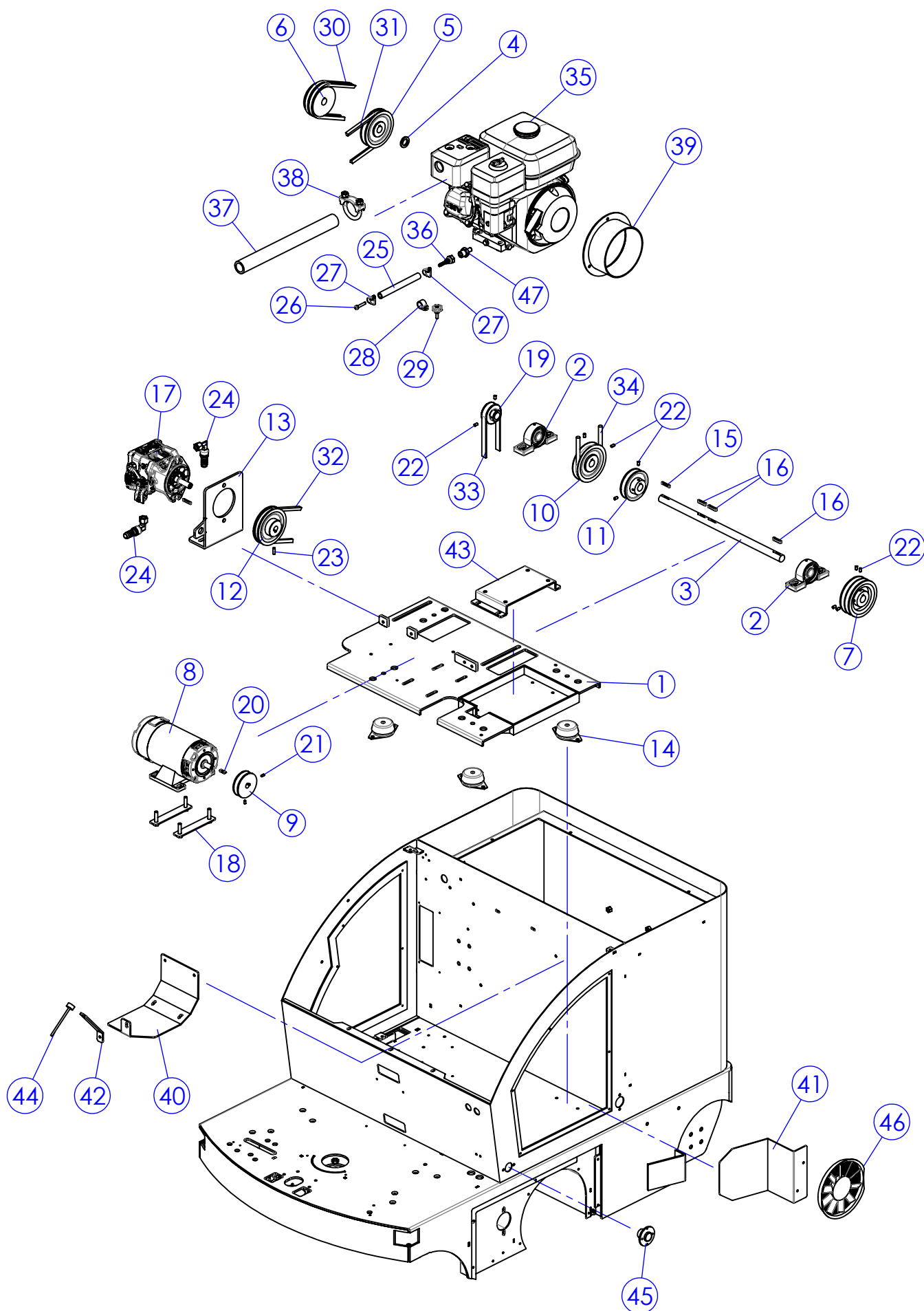
TAV.7



fiorentini

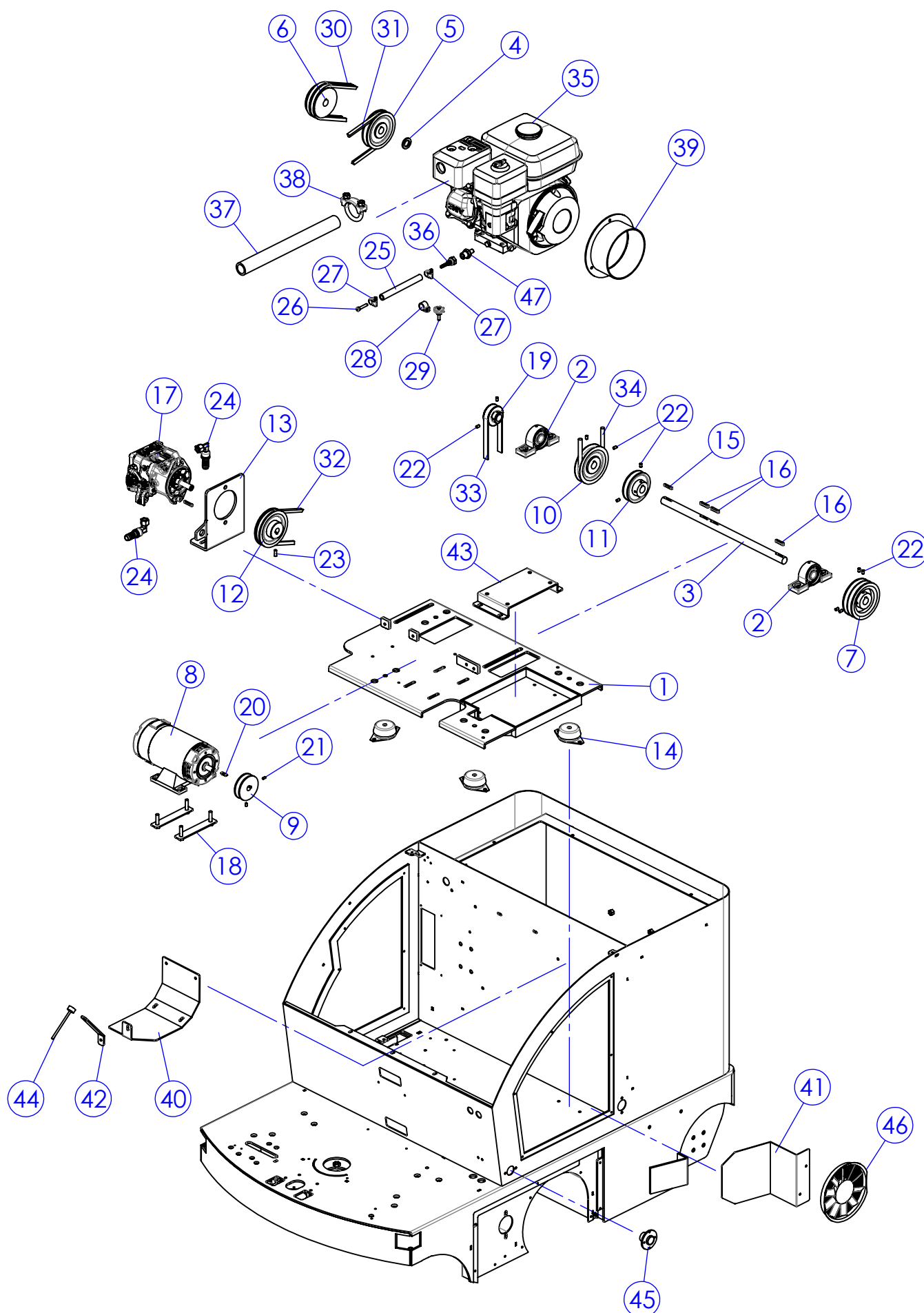
| POS. | CODICE | Q.TA | DESCRIZIONE | DESCRIPTION | DESCRIPTION | BEZEICHNUNG |
|------|--------|------|---------------------------------------|-------------------------------|--------------------|------------------|
| 1 | SU5275 | 1 | Supporto ventola | Fan support | Support | Halter |
| 2 | FU009 | 1 | Ventola Aspirazione | Suction Fan | Ventilateur | Luffer |
| 3 | PE5071 | 1 | Perno Ventola di Aspirazione | Suction Fan Pin | Pivot | Drehpunkt |
| 4 | MV5042 | 1 | Rondella Perno Ventola | Fan pin washer | Rondelle | Scheibe |
| 5 | MP5113 | 1 | Convogliatore ventola aspirazione | Conveyor | Convoyeur | Forder |
| 6 | LV5127 | 1 | Pedale flap | Pedal | Pèdale | Pedal |
| 7 | SN008 | 3 | Forcella M8 lunga | Fork M8 | Joint | Langes gelenk |
| 8 | MI077 | 3 | Perno con Molla per Forcella M8 lunga | Pin with Spring for Fork | Pivot | Bolzen mit feder |
| 9 | ML5031 | 1 | Molla flap | Spring | Ressort | Feder |
| 10 | LM5345 | 1 | Listello apertura flap | Sheet | Latte | Leiste |
| 11 | MV065 | 1 | Trafila M8x110 | Mounting stud | Vis | Schraube |
| 12 | LM5341 | 1 | Listello anteriore flap | Front flap sheet | Latte | Leiste |
| 13 | LM5343 | 1 | Listello posteriore flap | Rear flap sheet | Latte | Leiste |
| 14 | BP5077 | 1 | Minigonna flap | Flap blade | Bavette | Messer |
| 15 | LM5342 | 1 | Listello centrale flap | Central sheet | Latte | Leiste |
| 16 | BP5019 | 1 | Gomma parapolvere posteriore | Rear blade | Bavette | Messer |
| 17 | LV5121 | 1 | Leva pedale avanzamento | Forward lever | Levier | Hebel |
| 18 | CH011 | 1 | Linguetta 5x5x20 UNI6604-A | Parallel Key 5x5x20 UNI6604-A | Clavette | Passfeder |
| 19 | AL5053 | 1 | Albero ventola | Fan shaft | Arbre | Welle |
| 20 | CH020 | 1 | Linguetta 6x6x25 UNI6604-A | Tongue | Clavette | Passfeder |
| 21 | SU5277 | 1 | Supporto cuscinetti ventola | Fan bearing support | Support | Halter |
| 22 | CS005 | 2 | Cuscinetto a Sfere 6004 2RS1 | Ball Bearing 6004 2RS1 | Roulement a billes | Kugellager |
| 23 | SG065 | 1 | Anello seeger per interni Ø42 | Internal seeger ring | Seeger | Seeger |
| 24 | PP5046 | 1 | Puleggia ventola | Fan pulley | Poulie | Riemenscheibe |
| 25 | LM5397 | 1 | Lamiera supporto batteria | Battery support | Support | Halter |
| 26 | sb5042 | 1 | Serbatoio olio idraulico | Hydraulic oil tank | Reservoir | Behaelter |
| 27 | LM5398 | 1 | Lamiera conv. ventola aspirazione | Fan conveyor | Convoyeur | Forder |
| 28 | MI5246 | 1 | Protezione termica motore | Protection | Protection | Schutz |
| 29 | TA5033 | 1 | Tappo serbatoio olio idraulico | Cap | Couvercle | Deckel |
| 30 | ST5059 | 1 | Staffa supporto diodo india | Plate | Plaqueette | Teller |
| 31 | LV5124 | 1 | Leverismo di sollevamento | Lever | Levier | Hebel |
| 32 | CS5001 | 1 | Cuscinetto con supporto ASPP 202 | Bearing with support | Palier | Lagers |
| 33 | MI5022 | 1 | Giunto sferico M/F M6 | Screw | Vis | Schraube |
| 34 | SU654 | 2 | Supporto albero leva acceleratore | Shaft support | Support | Halter |
| 35 | PT101 | 1 | Piastrina | Plate | Plaqueette | Teller |
| 36 | LM5312 | 1 | Lamiera chiusura ventola aspirazione | Plate | Plaqueette | Teller |
| 37 | MV035 | 1 | Cerniera in Plastica Nera | Black plastic hinge | Charniere | Scharnier |
| 38 | ML201 | 1 | Molla per apertura acqua soluzione | Spring | Ressort | Feder |
| 39 | PT5192 | 1 | Piastra supporto cerniera | Plate | Plaqueette | Teller |
| 40 | VP5012 | 1 | Pomello freno a mano | Knob | Pommeau | Kugelfriff |
| 41 | MI5189 | 1 | Cavo a distanza comando pompa | Wire | Cable | Kabel |

TAV.8



fiorentini

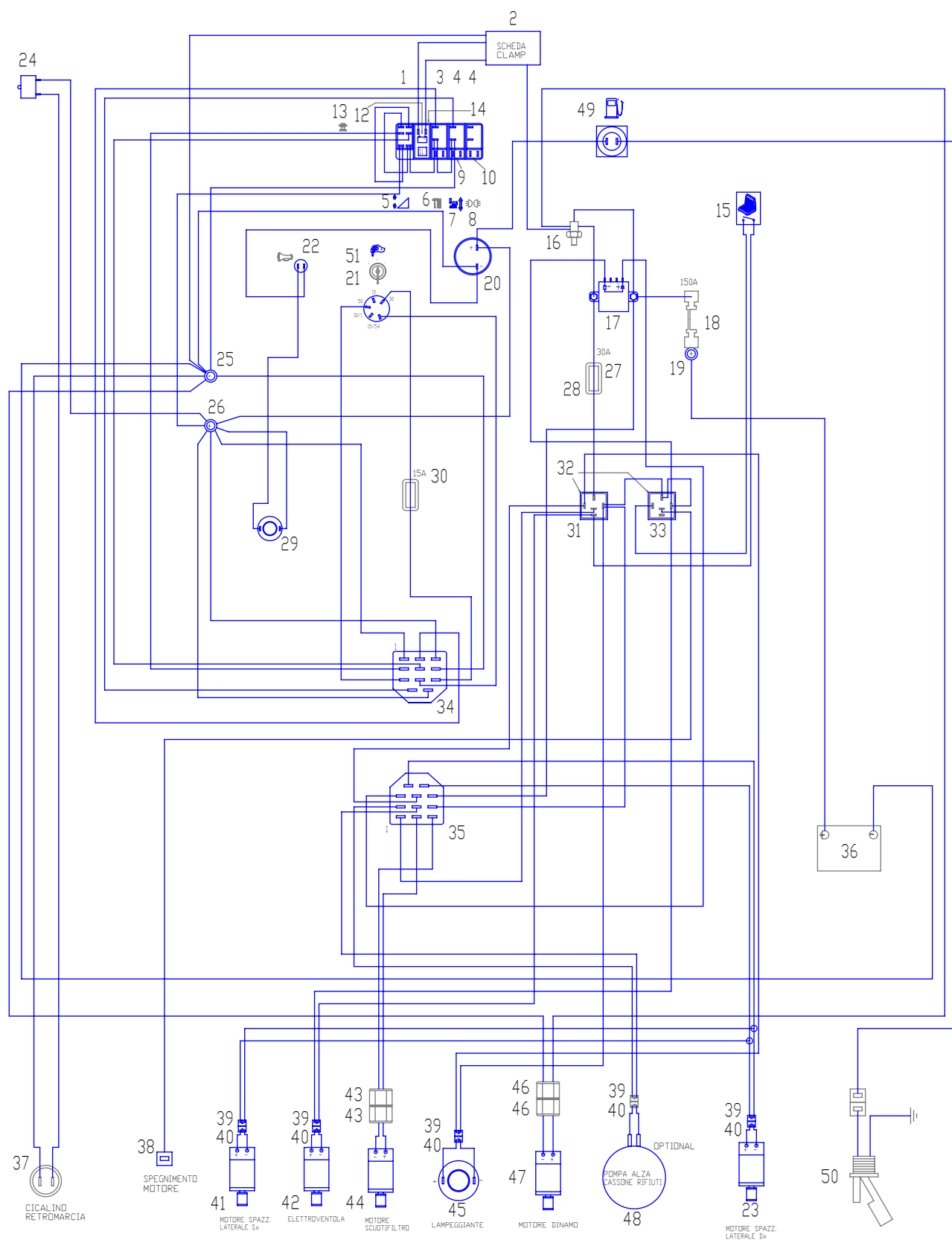
| POS. | CODICE | Q.TA | DESCRIZIONE | DESCRIPTION | DESCRIPTION | BEZEICHNUNG |
|------|--------|------|--|-----------------------------------|----------------|-----------------|
| 1 | SU5309 | 1 | Supporto motore Diesel/Benzina | Engine support | Support | Halter |
| 2 | CS5016 | 2 | Cuscinetto UCP204 | Bearing | Roulement | Kugellager |
| 3 | AL5061 | 1 | Albero trasmissione con sedi linguette | Shaft | Arbre | Welle |
| 4 | DT5092 | 1 | Distanziale De=30 Di=19 Sp.=4 | Spacer | Entretoise | Abstandhalter |
| 5 | PP5068 | 1 | Puleggia motore tipo A Dp=100 | Pulley | Poulie | Riemenscheibe |
| 6 | PP5070 | 1 | Puleggia Motore | Pulley | Poulie | Riemenscheibe |
| 7 | PP5071 | 1 | Puleggia motore trazione tipo 2A Dp=100 | Pulley | Poulie | Riemenscheibe |
| 8 | MO5115 | 1 | Motore dinamo 12V 750W | Dynamo motor | Moteur | Motor |
| 9 | PP5069 | 1 | Puleggia dinamo motore tipo A | Pulley | Poulie | Riemenscheibe |
| 10 | PP5066 | 1 | Puleggia motore ventola tipo A Dp=100 | Pulley | Poulie | Riemenscheibe |
| 11 | PP5065 | 1 | Puleggia pompa tipo A | Pulley | Poulie | Riemenscheibe |
| 12 | PP5067 | 1 | Puleggia pompa portata variabile tipo A Dp=100 | Pulley | Poulie | Riemenscheibe |
| 13 | SU5307 | 1 | Supporto pompa portata variabile | Pump support | Support | Halter |
| 14 | MI5157 | 4 | Antivibrante motore | Antivibration | Antivibratoire | Antivibrierende |
| 15 | CH010 | 2 | Linguetta 5x5x30 | Tab 5x5x30 | Clavette | Passfeder |
| 16 | CH023 | 3 | Linguetta 6x6x30 | Tab 6x6x30 | Clavette | Passfeder |
| 17 | PO5018 | 1 | Pompa P.V. BOP30A318 | Variable flow pump | Pompe | Pumpe |
| 18 | ST5044 | 2 | Staffa fissaggio dinamo | Plate | Plaque | Platte |
| 19 | PP5076 | 1 | Puleggia motrice spazzola centrale | Pulley | Poulie | Riemenscheibe |
| 20 | CH011 | 1 | Linguetta 5x5x20 UNI6604-A | Parallel Key 5x5x20 UNI6604-A | Clavette | Passfeder |
| 21 | VG013 | 2 | Grano M5x10 c/punta UNI5927/67 | Socket Set Screw Flat Point M5x10 | Grain | Duebel |
| 22 | VG021 | 10 | Grano senza testa M6x10 UNI5923 | Socket Set Screw Flat Point M6x10 | Grain | Duebel |
| 23 | VG024 | 1 | Grano M6x18 senza punta | Socket Set Screw M6x18 | Grain | Duebel |
| 24 | RC5117 | 2 | Raccordo speciale a 90 resca 5/8 + F90 1/4 | Union | Raccord | Anschluss |
| 25 | TB5002 | 1 | Tubo olio Ø10/16 telato nero 10bar | Hose | Tuyau | Rohr |
| 26 | VB5018 | 1 | Vite testa a brugola M6x30 (tagliata) | Socket Head Cap Screw M6x30 | Vis | Schraube |
| 27 | FS001 | 2 | Fascetta 8/12 | 08/12 stainless steel clamp | Bande | Schelle |
| 28 | fs5017 | 1 | Fascetta Ø20 | Clamp | Bande | Schelle |
| 29 | VP043 | 1 | Pomello M6x20 8 lobi | Knob | Pommeau | Kugelgriff |
| 30 | CI5046 | 2 | Cinghia AX20 Dp=541 | Belt | Courroie | Gurtel |
| 31 | CI5048 | 1 | Cinghia AX18 Dp=490 | Belt | Courroie | Gurtel |
| 32 | CI5047 | 1 | Cinghia AX27 Dp=720 | Belt | Courroie | Gurtel |
| 33 | CI5051 | 1 | Cinghia poli V PI belt 1016 J6 | Belt | Courroie | Gurtel |
| 34 | CI5027 | 1 | Cinghia sezione tonda Ø10 645 | Belt | Courroie | Gurtel |
| 35 | MO5047 | 1 | Motore Honda GX160 | Motor | Moteur | Motor |



fiorentini

| POS. | CODICE | Q.TA | DESCRIZIONE | DESCRIPTION | DESCRIPTION | BEZEICHNUNG |
|------|--------|------|-----------------------------------|---------------------|------------------------|---------------|
| 36 | RC5119 | 1 | Raccordo a pressare F. 3/8 | Union | Raccord | Anschluss |
| 37 | MP5161 | 1 | Tubo marmitta L=380 Di=34 | Hose | Tuyau | Rohr |
| 38 | FS020 | 1 | Collare gold 30-33 | Band | Bande | Band |
| 39 | MP5163 | 1 | Convogliatore aria | Air conveyor | Convoieur | Forder |
| 40 | LM5340 | 1 | Lamiera supp. serbatoio benzina | Fuel tank support | Support | Halter |
| 41 | LM5396 | 1 | Lamiera protezione motore | Plate | Plaquette | Teller |
| 42 | SU5355 | 1 | Supporto asta livello olio motore | Support | Support | Halter |
| 43 | SU5356 | 1 | Supporto motore Honda S28snew | Support | Support | Halter |
| 44 | MI5192 | 1 | Asta livello olio | Oil measuring stick | Jaugeur | Stab |
| 45 | FL5054 | 1 | Flangia attacco tubo marmitta | Flange | Flasque | Flansch |
| 46 | PY5281 | 1 | Ventola di raffreddamento 12V | Electric fan | Ventilateur electrique | Elektroluffer |
| 47 | RC5118 | 1 | Raccordo scarico olio | Jonction | Raccord | Anschluss |

TAV.9



fiorentini

| POS. | CODICE | Q.TA | DESCRIZIONE | DESCRIPTION | DESCRIPTION | BEZEICHNUNG |
|------|--------|------|---|-----------------------|---------------|----------------|
| 1 | IN5095 | 1 | Interruttore pulsante-0-pulsante | Switch | Interrupteur | Schalter |
| 2 | PY2537 | 1 | Scheda CLAMP1 controllo lampada 12V | Control card | Fiche | Karte |
| 3 | IN5085 | 1 | Interruttore a pulsante | Switch | Interrupteur | Schalter |
| 4 | IN5092 | 2 | Interruttore Ciam 511.111 | Switch | Interrupteur | Schalter |
| 5 | TG5027 | 1 | Vetrino alza/abbassa cassone rifiuti | Glass | Verre | Glas |
| 6 | PY5012 | 1 | Vetrino scuotifiltro | Glass | Verre | Glas |
| 7 | PY715 | 1 | Vetrino spazzole | Glass | Verre | Glas |
| 8 | PY5204 | 1 | Vetrino luci ant. verde | Glass | Verre | Glas |
| 9 | PY5080 | 3 | Portainterruttori intermedio | Switch support | Support | Halter |
| 10 | PY5081 | 2 | Portainterruttori terminale | Switch support | Support | Halter |
| 11 | PY5085 | 1 | Vetrino neutro verde | Glass | Verre | Glas |
| 12 | PY5123 | 1 | Vetrino batteria | Glass | Verre | Glas |
| 13 | PY5068 | 2 | Lampada 12V 3W | Lamp | Ampoule | Lampe |
| 14 | PY5129 | 1 | Spia di controllo | Control indicator | Indicateur | Anzeiger |
| 15 | MI378 | 1 | Sedile | Seat | Siege | Sitz |
| 16 | PY761 | 1 | Diodo 0233 india 200HFR40PSV 9E08 | Switch | Interrupteur | Schalter |
| 17 | PY5282 | 1 | Teleruttore SW80 12V | Remote control switch | Telerupteur | Fernschalter |
| 18 | PY5178 | 1 | Fusibile lamellare 150A | Lamellar fuse | Fusible | Sicherung |
| 19 | PY5028 | 1 | Supporto per fusibile M8x20 | Fuse support | Support | Halter |
| 20 | PY5086 | 1 | Contaore | Timer | Compte-heures | Stundenzaehler |
| 21 | PY5105 | 1 | Selettore a chiave | Key switch | Interrupteur | Schalter |
| 22 | IN053 | 1 | Interruttore a pulsante | Switch | Interrupteur | Schalter |
| 23 | MO5112 | 1 | Motoriduttore spazzola laterale Dx | Right brush motor | Moteur | Motor |
| 24 | IN5128 | 1 | Micro-interruttore MF37 | Switch | Interrupteur | Schalter |
| 25 | VE260 | 1 | Vite esagonale M8x16 | Screw | Vis | Schraube |
| 26 | PY5028 | 1 | Supporto per fusibile M8x20 | Fuse support | Support | Halter |
| 27 | PY5116 | 1 | Fusibile 30A | Fuse | Fusible | Sicherung |
| 28 | PY1059 | 2 | Porta fusibile volante | Fuse support | Support | Halter |
| 29 | MI118 | 1 | Avvisatore acustico 12V | Horn | Clacson | Hupe |
| 30 | PY5118 | 1 | Fusibile 15A | Fuse | Fusible | Sicherung |
| 31 | SL012 | 1 | Relè 12V 30A contatto chiuso | Relay | Relais | Relais |
| 32 | SU262 | 1 | Supporto relè 6.3 | Relay support | Support | Halter |
| 33 | SL011 | 1 | Relè 12V 30A | Relay | Relais | Relais |
| 34 | PY755 | 1 | Connettore 11 poli porta-femmina | Connector | Connecteur | Stecker |
| 35 | PY756 | 1 | Connettore 11 poli porta-maschio | Connector | Connecteur | Stecker |
| 36 | BT5004 | 1 | Batteria avviam. 12V 300A 45Ah | Battery | Batterie | Batterie |
| 37 | PY5180 | 1 | Cicalino retromarcia multifensione | Horn | Clacson | Hupe |
| 38 | MO5047 | 1 | Motore Honda GX160 | Diesel engine | Moteur | Motor |
| 39 | PY300 | 5 | Connett. 2 poli porta-femmina faston | Connector | Connecteur | Stecker |
| 40 | PY299 | 5 | Connett. 2 poli porta-maschio faston | Connector | Connecteur | Stecker |
| 41 | MO5111 | 1 | Motoriduttore spazzola laterale Sx | Left brush motor | Moteur | Motor |
| 42 | PY5281 | 1 | Ventola di raffreddamento 12V | Cooling fan | Ventilateur | Luffer |
| 43 | PY032 | 2 | Spina carica batteria 50A | Battery charge plug | Connecteur | Stift |
| 44 | MO5006 | 1 | Motore scuotifiltro 12V | Filtershaker motor | Moteur | Motor |
| 45 | PY5183 | 1 | Lampeggiante flexi lamp 12/14V | Blinking | Girophare | Blinkleuchte |
| 46 | PY032R | 2 | Spina carica batteria 50A rossa | Battery charge plug | Connecteur | Stift |
| 47 | MO5115 | 1 | Motore dinamo 12V 750W | Dynamo motor | Moteur | Motor |
| 48 | PO5027 | 1 | Pompa sollevamento benna posteriore 12V | Pump | Pompe | Pumpe |
| 49 | PY5128 | 1 | Vetrino carburante | Fuel glass | Verre | Glas |
| 50 | GL5005 | 1 | Galleggiante carburante | Float | Flotteur | Schwimmer |
| 51 | PY5248 | 1 | Chiave per interruttore | Key | Clè | Schlüssel |



fiorentini

WWW.FIORENTINISPA.COM

Organizzazione con
Sistema di Gestione Certificato
ISO 9001:2008



Mat. n.

Serial no.

Nr. de serie

Data di spedizione

Date of shipment

Date de spedition

Distributed by:

ING. O. FIORENTINI S.p.A.

“THE BEST IN FLOOR MACHINES”

FILIALI:

20132 MILANO – Fax. 02/2592779

Via Palmanova 211/a – Tel. 02/27207783 - 2564810

00012 Guidonia Montecelio (ROMA) – Fax. (0774)353419 - 353314

Via Ponte Corvo 20 – Tel. (0774)357184 - 353015

STABILIMENTO:

50033 PIANCALDOLI (FI) – Fax. 055/817144

Via Piancaldoli 1896 – Tel. 055/8173610